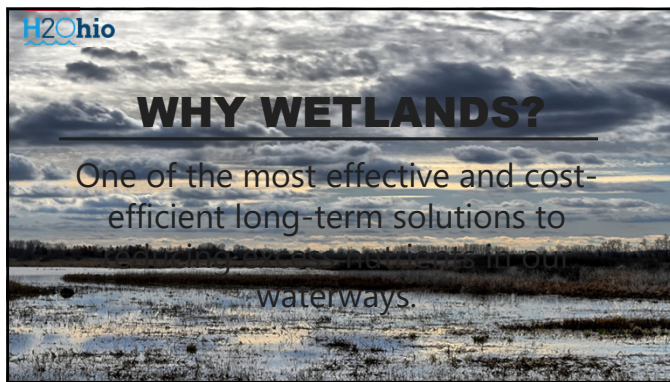
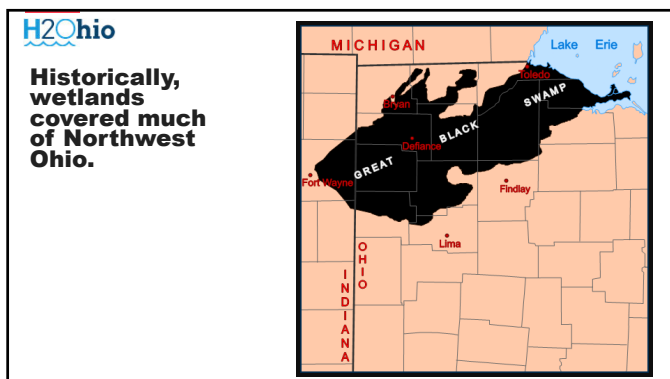




1



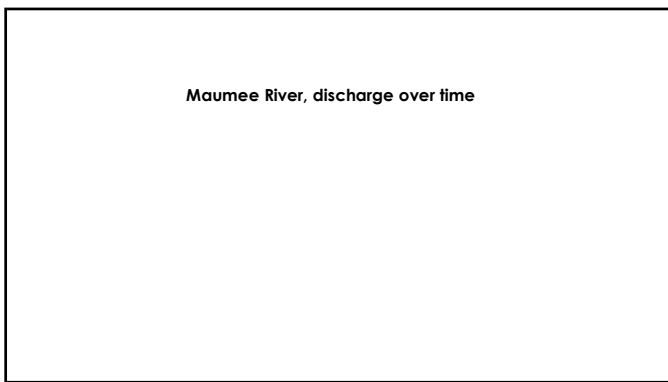
2



3



4




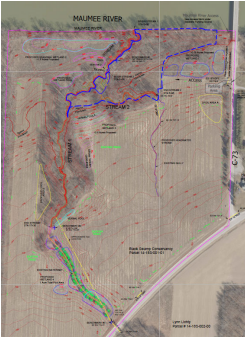
5



6







Forder Bridge


54-acre parcel adjacent to Maumee Scenic River in Paulding County

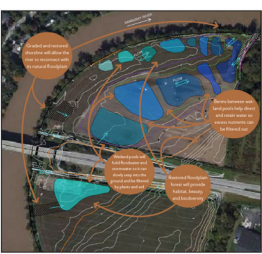
Collaborator: Black Swamp Conservancy

Restoration plans:

- Install wetlands in series
- Recontour stream banks to reconnect floodplain
- Install rifle grade control structures

10





Redhorse Bend


54-acre parcel adjacent to Sandusky River in Sandusky County

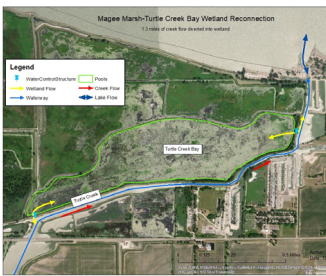
Collaborator: Black Swamp Conservancy

Restoration plans:

- Reconnect floodplain by removing dikes
- Increase floodplain capacity
- Remove tile
- Restore native vegetation

11





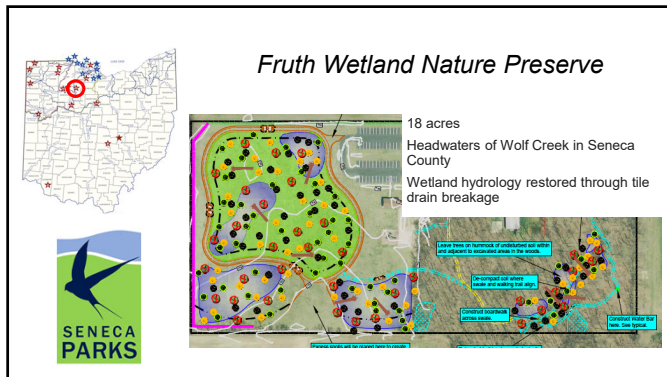
Magee Marsh-Turtle Creek Bay

173 acres

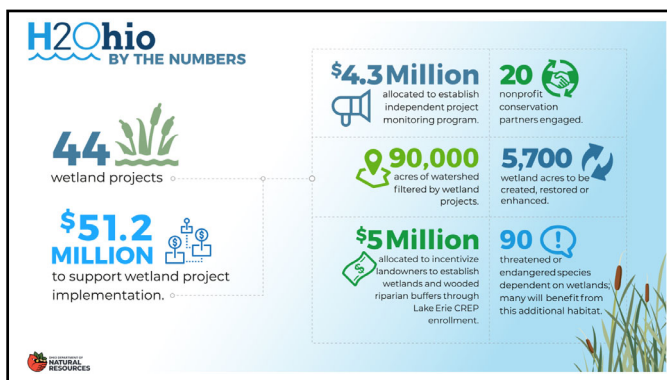
Connecting Turtle Creek Bay wetland through a water level control structure to exchange upstream of discharge into Lake Erie

Managed by ODNR Division of Wildlife

12



13



14

H2Ohio LAKE ERIE CREP H2OHIO WATER QUALITY INCENTIVE PROGRAM

Sign-up is open until January 29th.

Apply by contacting your local ODNR Private Lands Biologist, Service Forester, or Soil and Water Conservation District.

- One-time payment of \$2,000 per acre in combination with Lake Erie CREP to restore wetlands and forested buffers.
- Up to \$5 Million allocated.
- Wetlands and riparian buffers reduce nutrient loading into waterways and help reduce flooding.
- Riparian buffers also stabilize streambanks to reduce soil erosion.

The slide includes a map of Ohio with a red circle highlighting the Lake Erie region. Below it is a map of the Lake Erie watershed, showing the various counties and watersheds that contribute to the lake's water quality.

15

 PROJECT MONITORING 		
		
	 	
